

Commercial Offices



Flex Connectors' flex7 lighting connection and control System was installed over 6 floors at 4 Carlton Gardens, London. The system was designed by Stinton Jones Consulting Engineers LLP and installed by Contractor Langley Electrical of Harlow. Flex Connectors were selected for the project due to their user-friendly design, quick installation time and the fact that they do not require any commissioning.

**4 Carlton
Gardens,
London**

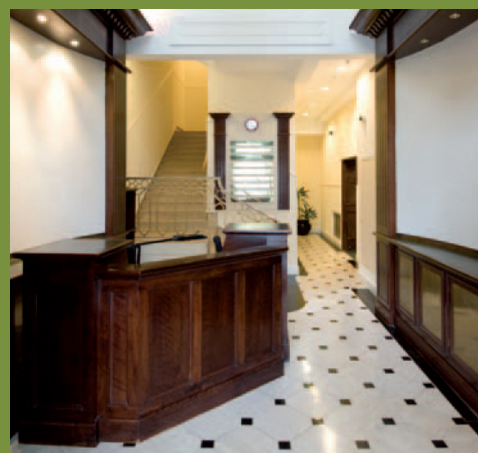


The lighting control specification called for absence control in the open plan offices on each of the 6 floors.

A solution was required for the open plan office where several absence sensors operating locally needed to be initiated on by just a single switch located at the main doorway.

Absence Control

This was simple to achieve using a number of absence sensors from the flex7 Control plus range of networkable sensors. Each sensor is networked back to the single switch, so that operating the switch first thing in the morning initiates all the lights on ready for others to arrive. Importantly, because each sensor works locally for absence, the lights under a particular work station will eventually time out if they are left unoccupied – thus saving energy where it was not needed.



Absence Detection, With Presence Enabled

There is however, a problem which is particular to large open plan offices – if a person leaves their desk to talk to a colleague at the next desk. It is possible that during their absence their own lights switch off. With a normal absence sensor the light would have to be turned back on at the switch by the door. This can result in lights being turned on at work stations that are not occupied. flex7 offers a solution to this problem – during set up it is possible to set flex7 absence sensors with presence detection enabled. This means that when an individual walks back to his desk his lights will automatically switch back on.

This type of hybrid sensor, unique to flex7, is the perfect choice for control and is probably the most optimal in energy saving. When a 3 position centre off switch is chosen it is also possible to initiate the lights off as well as on, thus making it perfect as a last man out switch.

Daylight Dimming Lighting Control

Daylight linking was also a requirement, so dimming type sensors were chosen. This means that luminaires will automatically dim down when there is adequate daylight, saving energy whenever possible. As they are dimming type sensors, the single switch at the doorway is capable of initiating the lights on and off as well as of master dimming up and down the entire open plan office if required.